

# LE PETIT THEATRE

## Technical Overview

Thank you for your interest in Le Petit Theatre!

January 29<sup>th</sup>, 2024

This document is intended to provide general technical information. Please refer to the accompanying documents for more details.

For questions, and to discuss event details please contact:

Eddie McIntyre, Production Manager

Email: [emcintyre@lepetittheatre.com](mailto:emcintyre@lepetittheatre.com)

Direct: 504.522.2081 XT 9324

### **Stage & Scenic**

Le Petit Theatre is a small proscenium theatre, built in 1922, with several renovations and modernizations since. As detailed in the attached drawings, the proscenium is 28'-10" wide. The total usable stage depth is about 31' (including the pit cover). Downstage of the proscenium is a trapped floor that can be opened to the orchestra pit below. The stage has very shallow wings left and right. There is a scenic wall about 3' from the upstage building wall that creates an effective cross over path. Our stock soft goods hang includes a dark red grand drape, and three sets of black legs & borders. We do not have a full stage black.

### **Seating Counts**

Orchestra Fixed Seats – 205

Orchestra Removable Seats – 4

Balcony Fixed Seats – 114

**Total Seating Capacity - 323**

### **Lighting**

The theatre is equipped with a complete theatrical lighting package. Our theatre stays hung with a complete plot of Source Fours, Fresnels, and Pars, as well as (2) I-Qs and (11) Martin Mac Auras. Our house console is an ETC Ion. We can provide complete rep plot information. Our staff is available to assist with lighting in any way you need. We generally don't rearrange the rep plot for special events, we prefer instead to use our moving lights to take care of any special needs you have.

We have (1) 60AMP, three phase Cam lock tie-in backstage, and (1) of the same in our control booth, at Front of House

# LE PETIT THEATRE

## Technical Overview

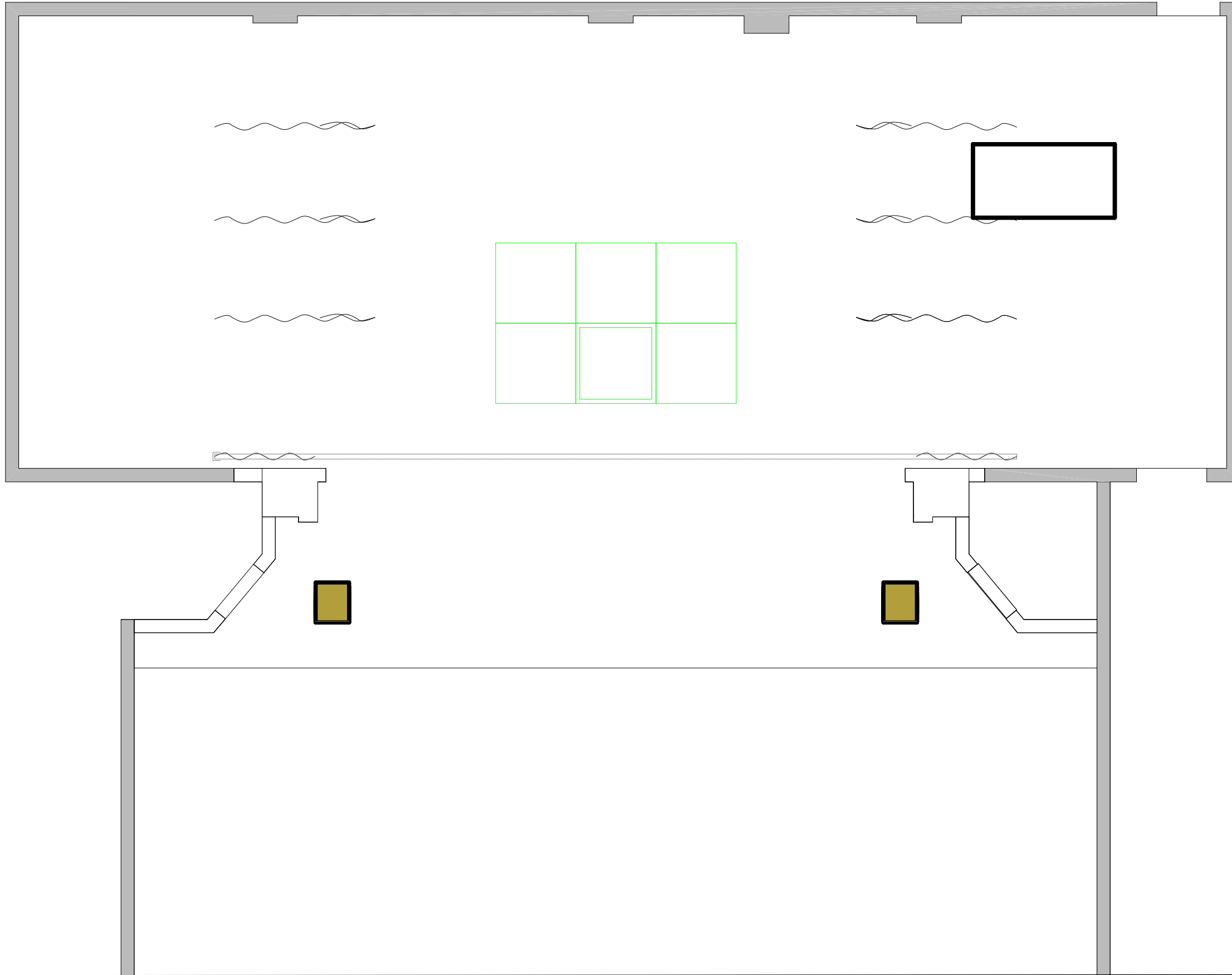
### **Sound**

Our house sound system consists of (2) arrays of JBL VRX powered speakers for main L&R, (2) AudioTechnica front fill speakers, mounted on the front of the stage, and (2) JBL VRX subs that can be placed as needed. We have (6) additional wedges (various types) that can be placed as needed for use as monitors or for practical effects.

The FOH Console is a SoundCraft VI3000. This generally lives at the back of the balcony in our built in control booth. In some situations we may move the audio console to a purpose-built table in the back left corner of the orchestra.

### **Video**

There is one 8k projector installed on the underside of the balcony. A 16' x 10' projection screen is installed and can be flown in just upstage of the grand drape. The projector is an NEC NP-PA803U. It's an 8k, 3 Chip LCD projector. The native resolution is 1920x1200, which works well on our 16:10 screen. We can project 16:9 video with small black bars top & bottom. The installed playback system is a MacBook Pro, running QLab 5. Video is sent as HDMI via HD BaseT. You are welcome to bring your own play back equipment as well, provided it outputs HDMI. We are not able to accommodate DCP at this time, but can recommend vendors who can.



DISCLAIMER: LE PETIT THEATRE MAKES NO REPRESENTATION OR WARRANTIES, EXPRESS OR IMPLIED, WITH RESPECT TO THE USE OF THE DRAWING PROVIDED HEREIN, REGARDLESS OF ITS FORMAT OR THE MEANS OF ITS TRANSMISSION. THERE IS NO GUARANTEE OR REPRESENTATION TO THE USER AS TO THE ACCURACY, CURRENCY, SUITABILITY, OR RELIABILITY OF THIS DRAWING FOR ANY PURPOSE. THIS DRAWING AND INFORMATION CONTAINED HEREIN IS FOR GENERAL PRESENTATION PURPOSES ONLY. THE DRAWING IS NOT INTENDED FOR USE ON ENGINEERING DESIGN PLANS. THIS DRAWING AND THE INFORMATION CONTAINED THEREIN IS THE CONFIDENTIAL, PROPRIETARY INFORMATION OF LE PETIT THEATRE AND MAY NOT BE USED OR REPRODUCED WITHOUT APPROVAL OF LE PETIT THEATRE. COPYRIGHT LE PETIT THEATRE 2016. ALL RIGHTS RESERVED.

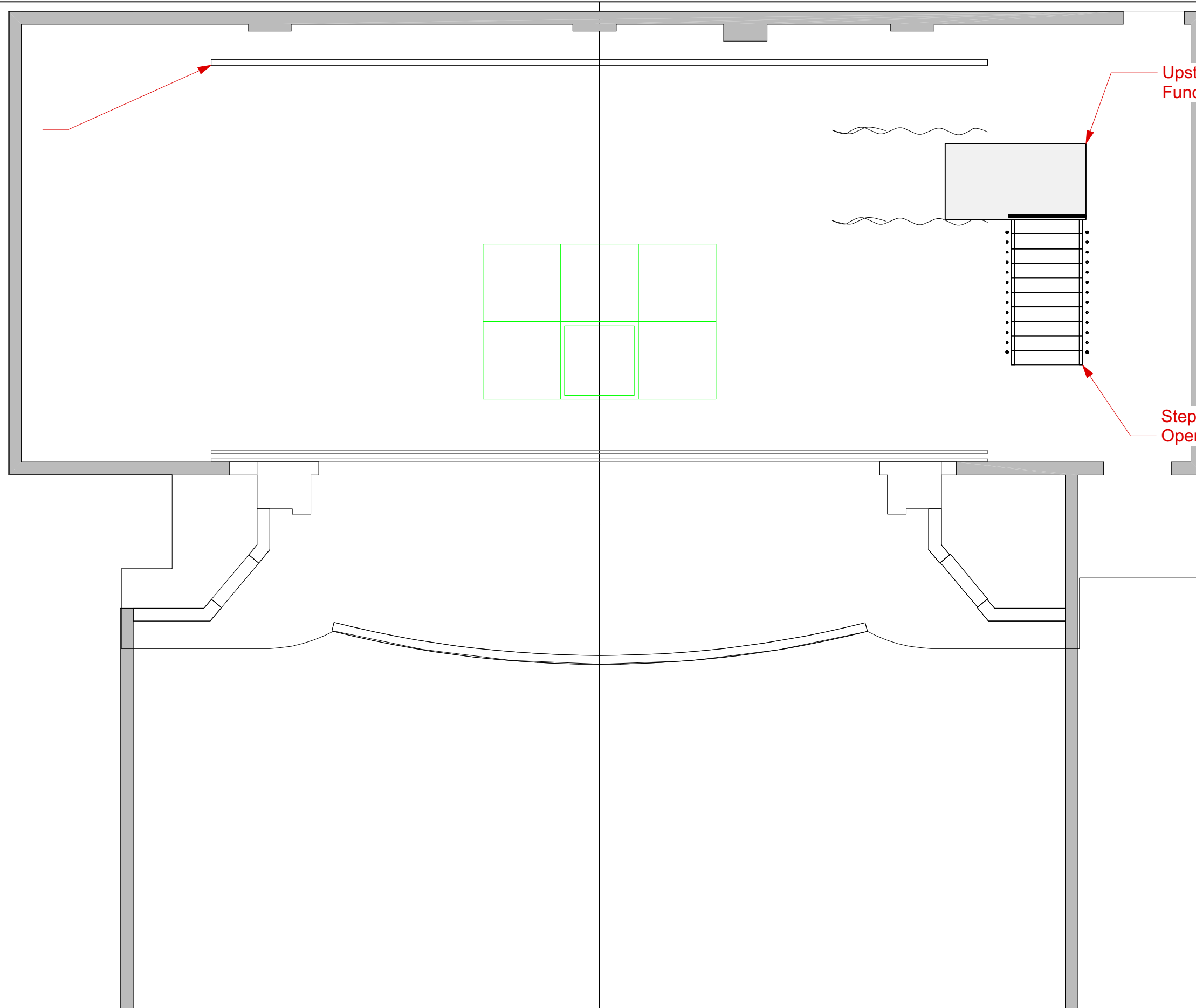
Revision Date  
9/24/16  
Load-In Date  
N/A

Project  
LPT - Space Drawings

Updated By  
J Lanius  
Sheet Title  
GP - Clear Stage



Upstage Faux Brick wall/Flat Wall  
Creates Crossover



Upstage Cover installed.  
Functions as floor.

Steps to Orchestra pit.  
Open hole, with rails.

Revision Date

9/24/16

Load-In Date

N/A

Project

LPT - Space Drawings

Updated By

J Lanius

Sheet Title

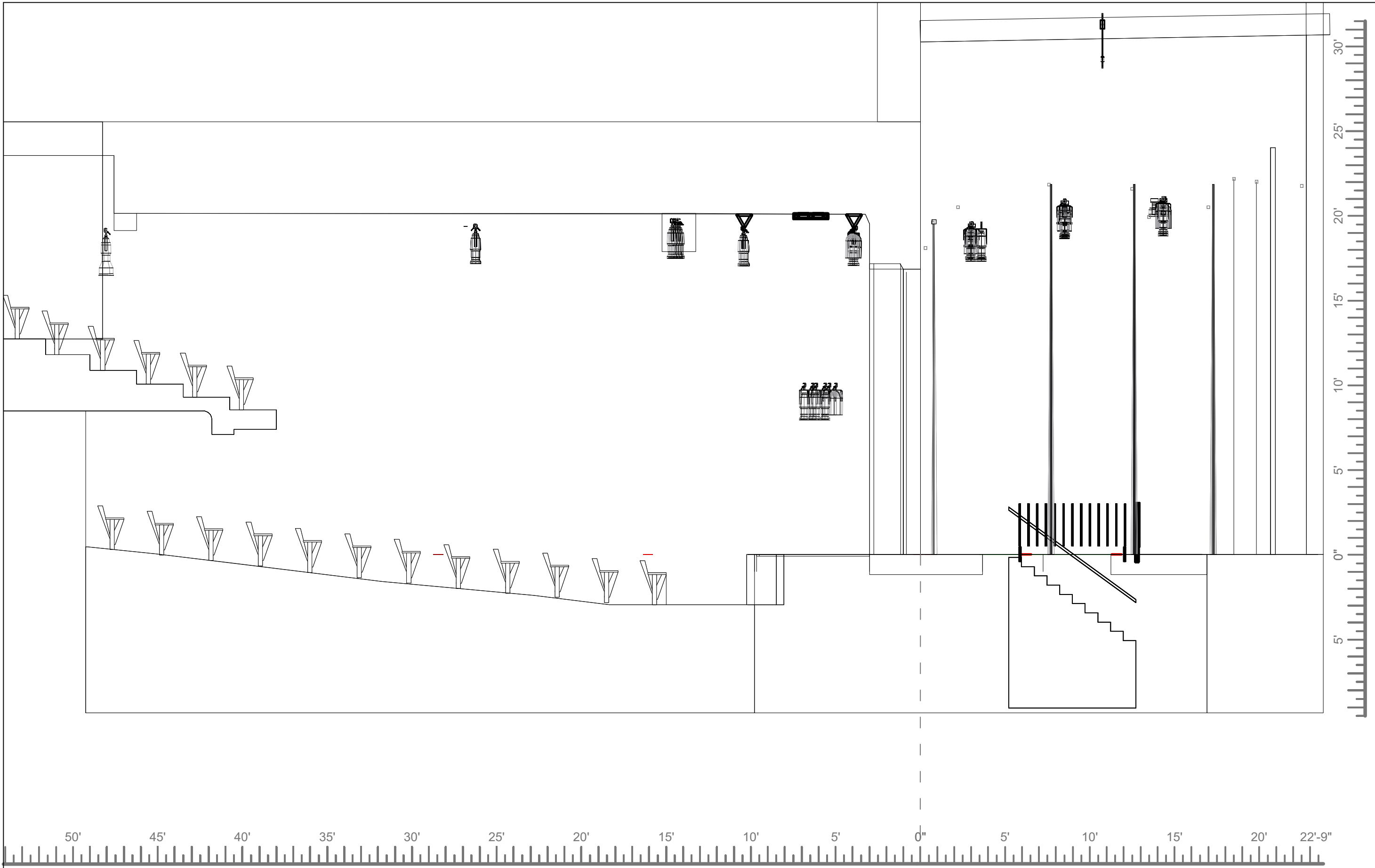
GP - Rep Soft Goods Hang



DISCLAIMER: LE PETIT THEATRE MAKES NO REPRESENTATION OR WARRANTIES, EXPRESS OR IMPLIED, WITH RESPECT TO THE USE OF THE DRAWING PROVIDED HEREIN, REGARDLESS OF ITS FORMAT OR THE MEANS OF ITS TRANSMISSION. THERE IS NO GUARANTEE OR REPRESENTATION TO THE USER AS TO THE ACCURACY, CURRENCY, SUITABILITY, OR RELIABILITY OF THIS DRAWING FOR ANY PURPOSE. THIS DRAWING AND INFORMATION CONTAINED HEREIN IS FOR GENERAL PRESENTATION PURPOSES ONLY. THE DRAWING IS NOT INTENDED FOR USE ON ENGINEERING DESIGN PLANS. THIS DRAWING AND THE INFORMATION CONTAINED THEREIN IS THE CONFIDENTIAL, PROPRIETARY INFORMATION OF LE PETIT THEATRE AND MAY NOT BE USED OR REPRODUCED WITHOUT APPROVAL OF LE PETIT THEATRE. COPYRIGHT LE PETIT THEATRE 2016. ALL RIGHTS RESERVED.

Page

2



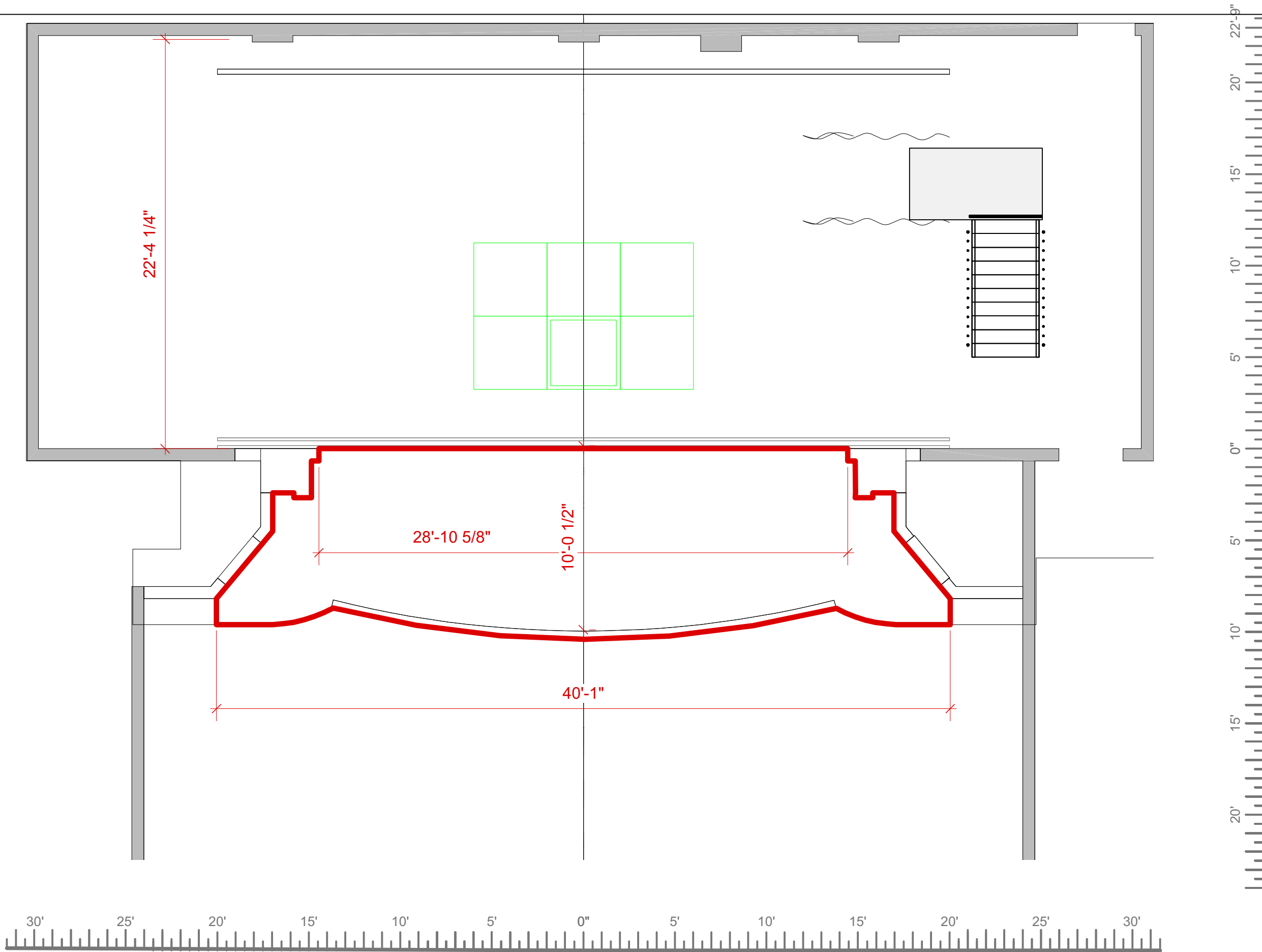
Revision Date  
 9/24/16  
 Load-In Date  
 N/A

Project  
 LPT - Space Drawings

Updated By  
 J Lanius  
 Sheet Title  
 Section - With Softgoods



DISCLAIMER: LE PETIT THEATRE MAKES NO REPRESENTATION OR WARRANTIES, EXPRESS OR IMPLIED, WITH RESPECT TO THE USE OF THE DRAWING PROVIDED HEREIN, REGARDLESS OF ITS FORMAT OR THE MEANS OF ITS TRANSMISSION. THERE IS NO GUARANTEE OR REPRESENTATION TO THE USER AS TO THE ACCURACY, CURRENCY, SUITABILITY, OR RELIABILITY OF THIS DRAWING FOR ANY PURPOSE. THIS DRAWING AND INFORMATION CONTAINED HEREIN IS FOR GENERAL PRESENTATION PURPOSES ONLY. THE DRAWING IS NOT INTENDED FOR USE ON ENGINEERING DESIGN PLANS. THIS DRAWING AND THE INFORMATION CONTAINED THEREIN IS THE CONFIDENTIAL, PROPRIETARY INFORMATION OF LE PETIT THEATRE AND MAY NOT BE USED OR REPRODUCED WITHOUT APPROVAL OF LE PETIT THEATRE. COPYRIGHT LE PETIT THEATRE 2016. ALL RIGHTS RESERVED.



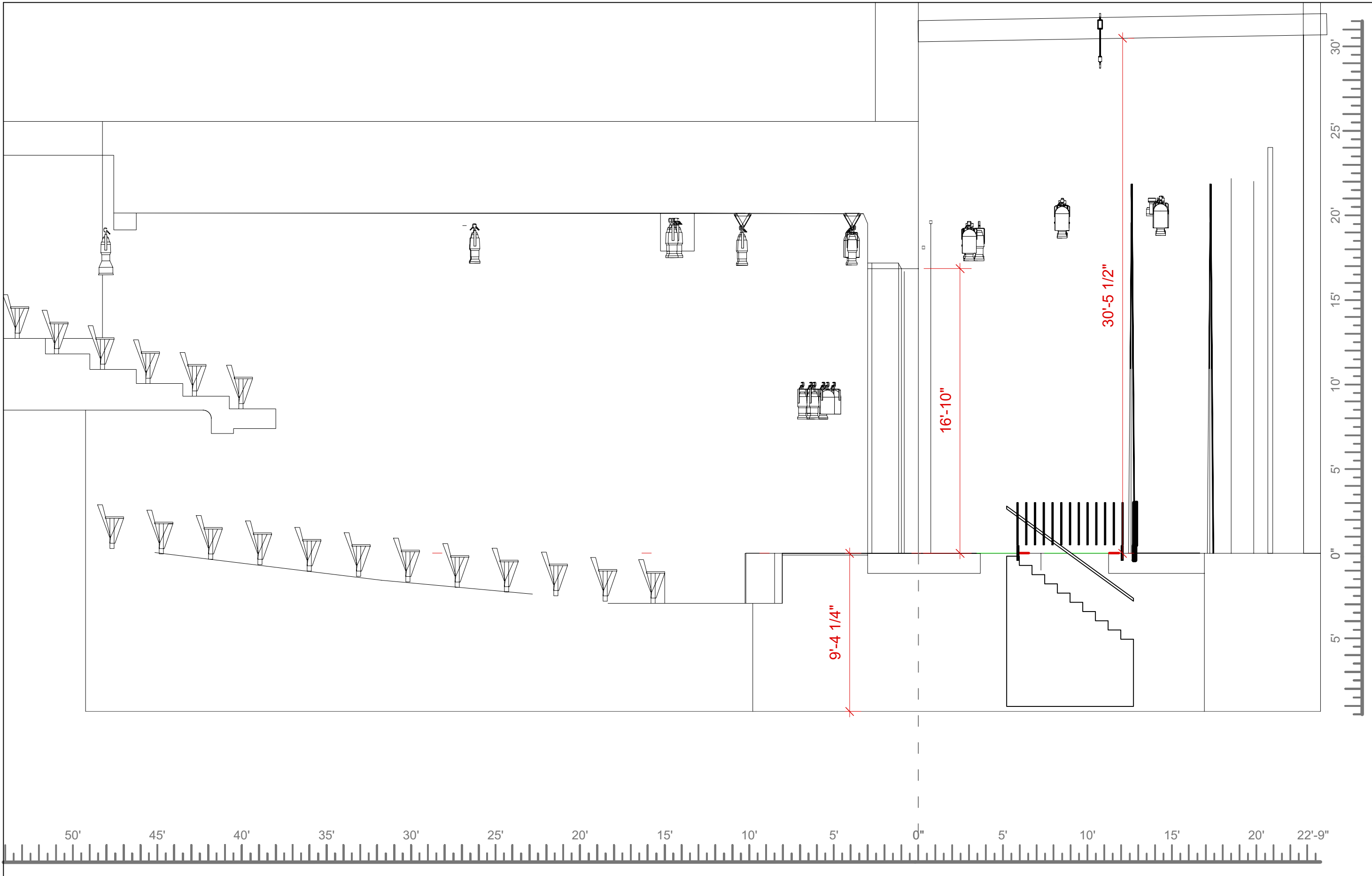
DISCLAIMER: LE PETIT THEATRE MAKES NO REPRESENTATION OR WARRANTIES, EXPRESS OR IMPLIED, WITH RESPECT TO THE USE OF THE DRAWING PROVIDED HEREIN, REGARDLESS OF ITS FORMAT OR THE MEANS OF ITS TRANSMISSION. THERE IS NO GUARANTEE OR REPRESENTATION TO THE USER AS TO THE ACCURACY, CURRENCY, SUITABILITY, OR RELIABILITY OF THIS DRAWING FOR ANY PURPOSE. THIS DRAWING AND INFORMATION CONTAINED HEREIN IS FOR GENERAL PRESENTATION PURPOSES ONLY. THE DRAWING IS NOT INTENDED FOR USE ON ENGINEERING DESIGN PLANS. THIS DRAWING AND THE INFORMATION CONTAINED THEREIN IS THE CONFIDENTIAL, PROPRIETARY INFORMATION OF LE PETIT THEATRE AND MAY NOT BE USED OR REPRODUCED WITHOUT APPROVAL OF LE PETIT THEATRE. COPYRIGHT LE PETIT THEATRE 2016. ALL RIGHTS RESERVED.

Revision Date  
9/24/16  
Load-In Date  
N/A

Project  
LPT - Space Drawings

Updated By  
J Lanius  
Sheet Title  
GP - With Dims





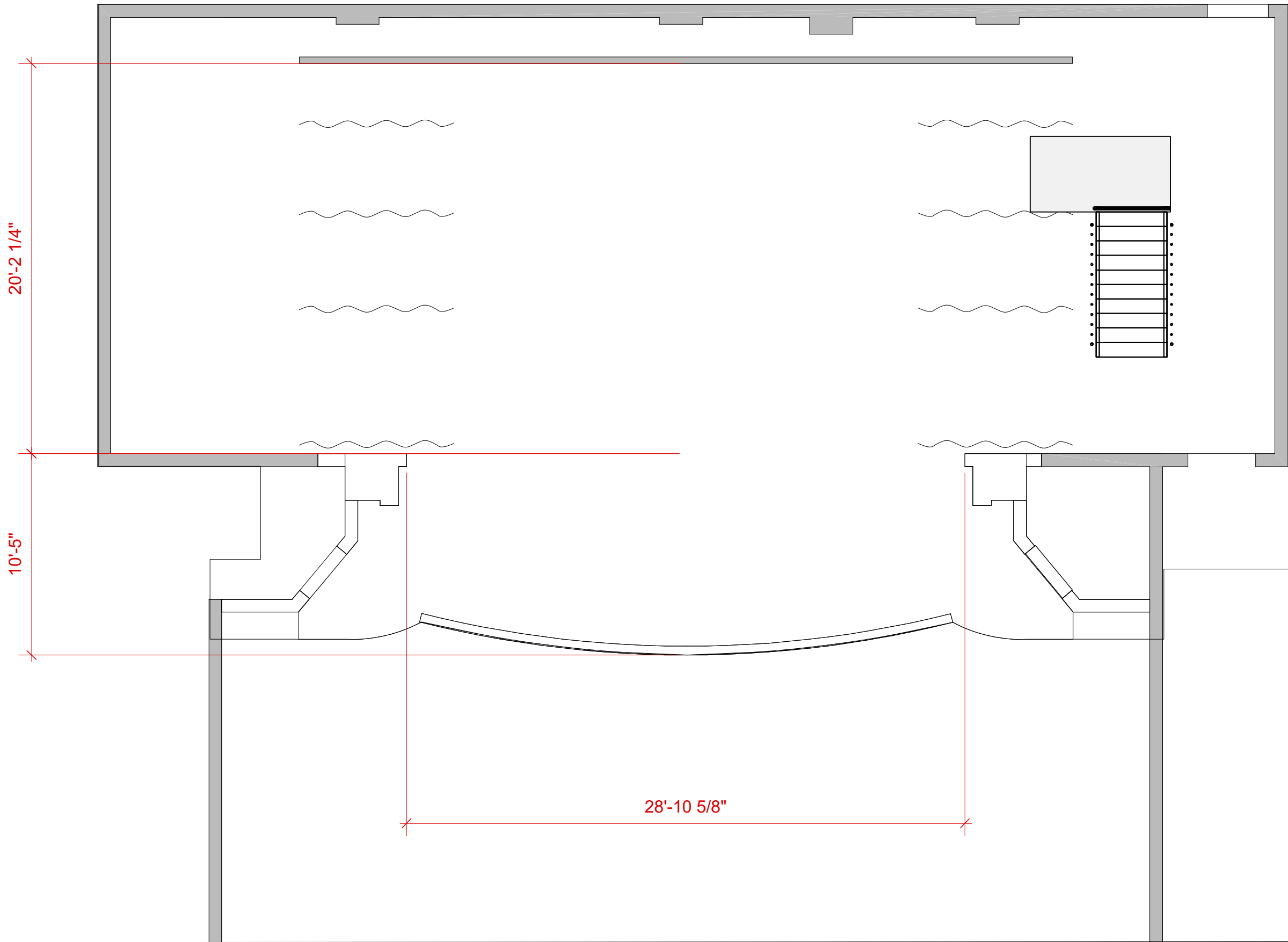
DISCLAIMER: LE PETIT THEATRE MAKES NO REPRESENTATION OR WARRANTIES, EXPRESS OR IMPLIED, WITH RESPECT TO THE USE OF THE DRAWING PROVIDED HEREIN, REGARDLESS OF ITS FORMAT OR THE MEANS OF ITS TRANSMISSION. THERE IS NO GUARANTEE OR REPRESENTATION TO THE USER AS TO THE ACCURACY, CURRENCY, SUITABILITY, OR RELIABILITY OF THIS DRAWING FOR ANY PURPOSE. THIS DRAWING AND INFORMATION CONTAINED HEREIN IS FOR GENERAL PRESENTATION PURPOSES ONLY. THE DRAWING IS NOT INTENDED FOR USE ON ENGINEERING DESIGN PLANS. THIS DRAWING AND THE INFORMATION CONTAINED THEREIN IS THE CONFIDENTIAL, PROPRIETARY INFORMATION OF LE PETIT THEATRE AND MAY NOT BE USED OR REPRODUCED WITHOUT APPROVAL OF LE PETIT THEATRE. COPYRIGHT LE PETIT THEATRE 2016. ALL RIGHTS RESERVED.

Revision Date  
9/24/16  
Load-In Date  
N/A

Project  
LPT - Space Drawings

Updated By  
J Lanius  
Sheet Title  
Section - With Dims





DISCLAIMER: LE PETIT THEATRE MAKES NO REPRESENTATION OR WARRANTIES, EXPRESS OR IMPLIED, WITH RESPECT TO THE USE OF THE DRAWING PROVIDED HEREIN, REGARDLESS OF ITS FORMAT OR THE MEANS OF ITS TRANSMISSION. THERE IS NO GUARANTEE OR REPRESENTATION TO THE USER AS TO THE ACCURACY, CURRENCY, SUITABILITY, OR RELIABILITY OF THIS DRAWING FOR ANY PURPOSE. THIS DRAWING AND INFORMATION CONTAINED HEREIN IS FOR GENERAL PRESENTATION PURPOSES ONLY. THE DRAWING IS NOT INTENDED FOR USE ON ENGINEERING DESIGN PLANS. THIS DRAWING AND THE INFORMATION CONTAINED THEREIN IS THE CONFIDENTIAL, PROPRIETARY INFORMATION OF LE PETIT THEATRE AND MAY NOT BE USED OR REPRODUCED WITHOUT APPROVAL OF LE PETIT THEATRE. COPYRIGHT LE PETIT THEATRE 2016. ALL RIGHTS RESERVED.

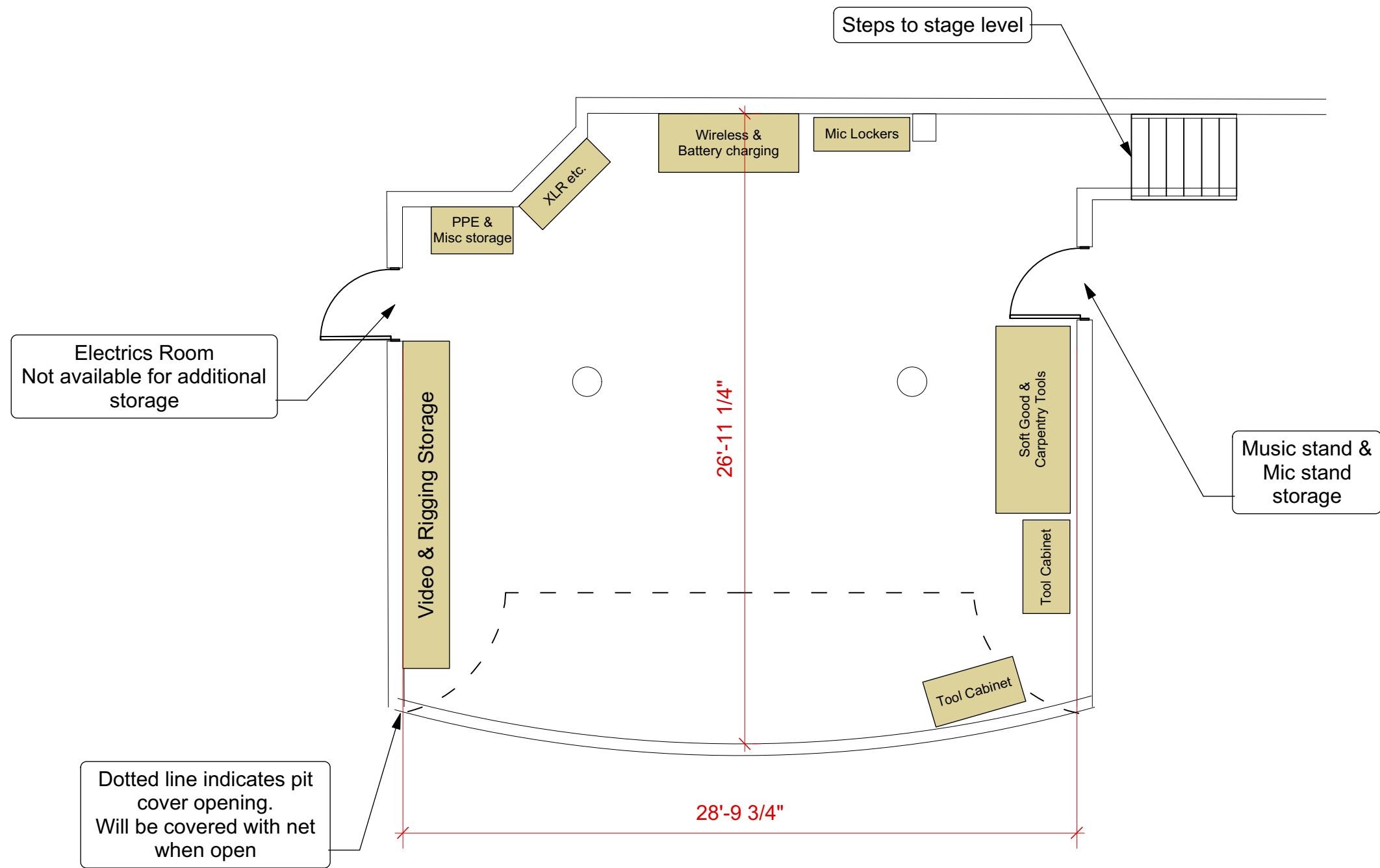
Revision Date  
9/24/16  
Load-In Date  
N/A

Project  
LPT - Space Drawings

Updated By  
J Lanius  
Sheet Title  
GP - Clear Stage







Dotted line indicates pit cover opening. Will be covered with net when open

1 Orchestra Pit Schematic Layout  
Scale: 3/16" = 1'-0"

Revision Date  
11/9/17  
Load-In Date  
N/A

Project  
LPT - Space Drawings

Updated By  
J Lanius  
Sheet Title  
GP - Orchestra Pit Layout

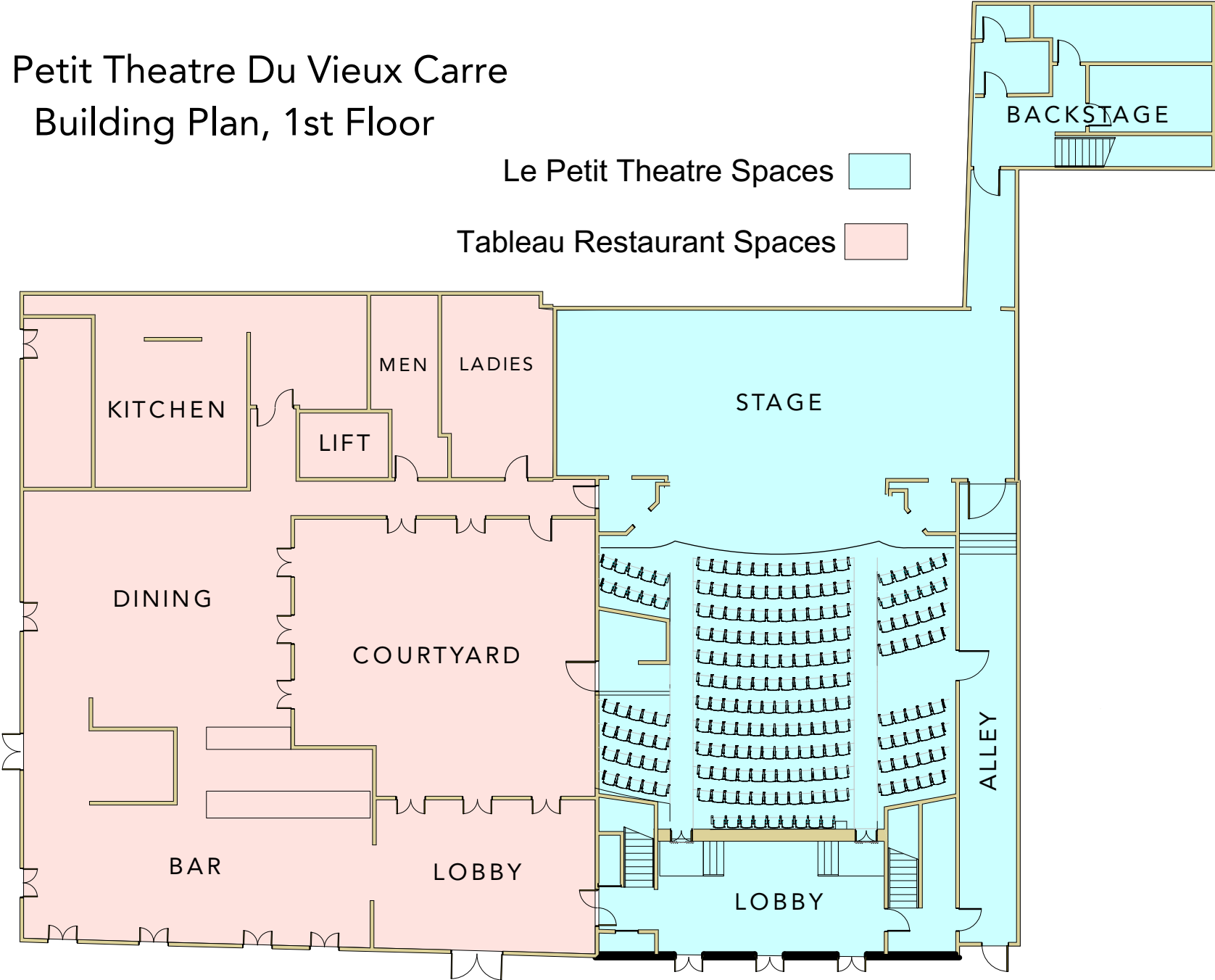


# Le Petit Theatre Du Vieux Carre Building Plan, 1st Floor

Le Petit Theatre Spaces

Tableau Restaurant Spaces

CHARTRES STREET



SAINT PETER STREET